

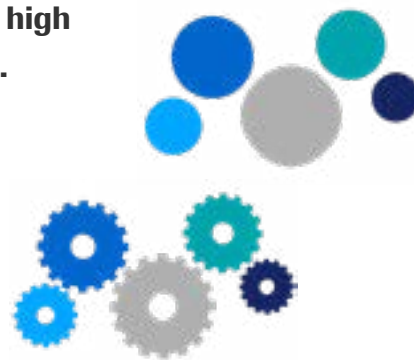
Focusing on the future

*An example of successful consolidation
with the Molecular Work Area*



Ensuring a lab's long-term success requires planning, yet some laboratories view scaling up as a challenge.

This example shows how the innovative cobas® 8800 System can help a typical large commercial laboratory group efficiently scale up and transform their molecular testing operations by delivering very high throughput, automated sample preparation, and real-time PCR.

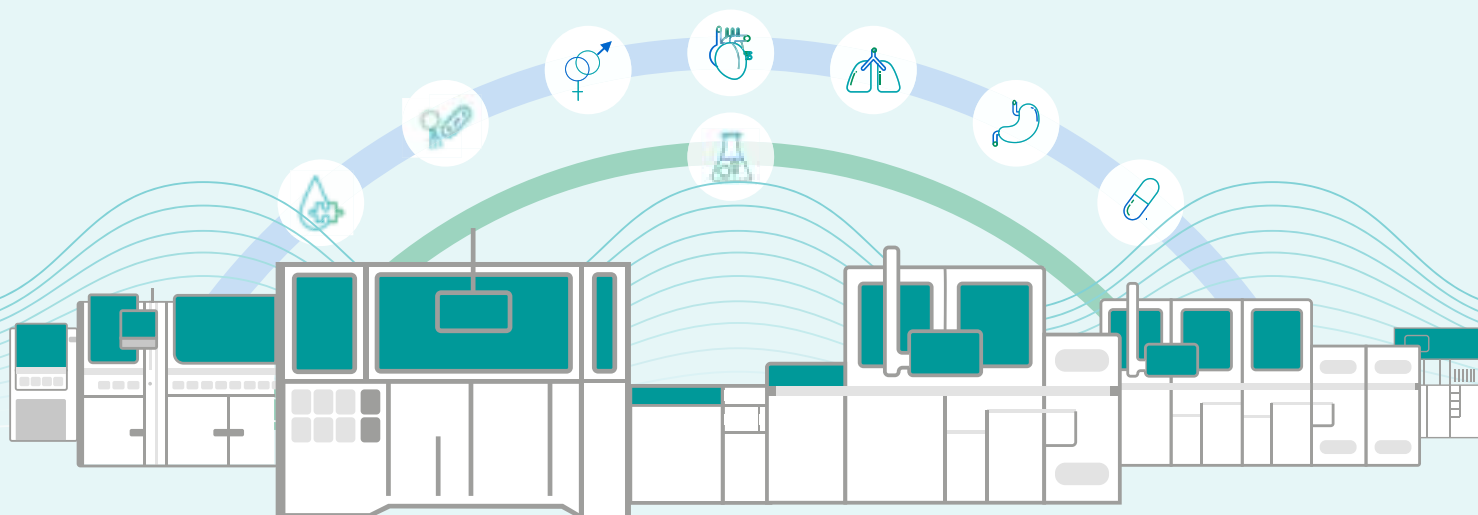


Realising efficiency goals through consolidation & automation

Due to the large scale of operations – processing more than 2.5 million patient samples every week – they could not afford interruptions in their service delivery. Adding to the complexity of the transformation was the wide range of services the group offered: screening, diagnostic and monitoring tests, specialised molecular testing and Next Generation Sequencing.

The laboratory aimed to improve their quality, operations, and service by eliminating manual processes and streamlining workflows. With the **Molecular Work Area**, they were able to successfully consolidate their instrumentation and assays, creating a fully automated workflow that allowed for future growth.

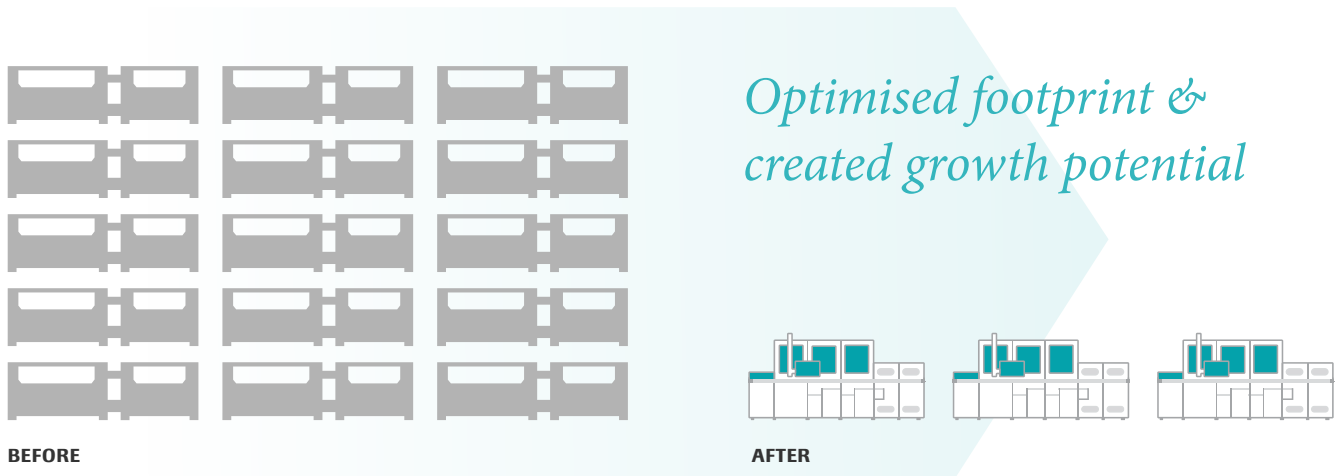
The Molecular Work Area



Consolidating instrumentation, expanding capabilities

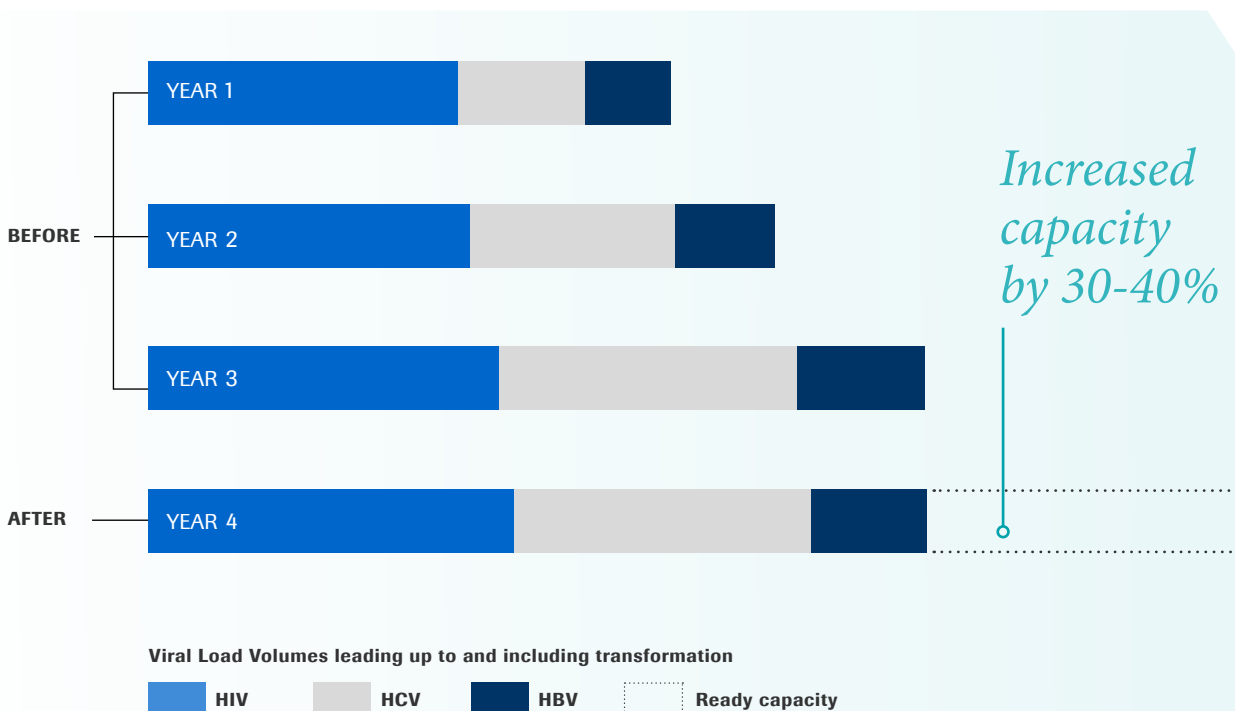
The group had partnered with Roche for more than two decades, and was now ready to consolidate their current instrumentation, which included COBAS® AMPLICOR, COBAS® AmpliPrep and COBAS® TaqMan® Systems.

In 2016, the group took their first step toward sustainability by consolidating their virology testing instruments, moving from **15 CAP-CTM systems** to **three cobas® 8800 Systems**.

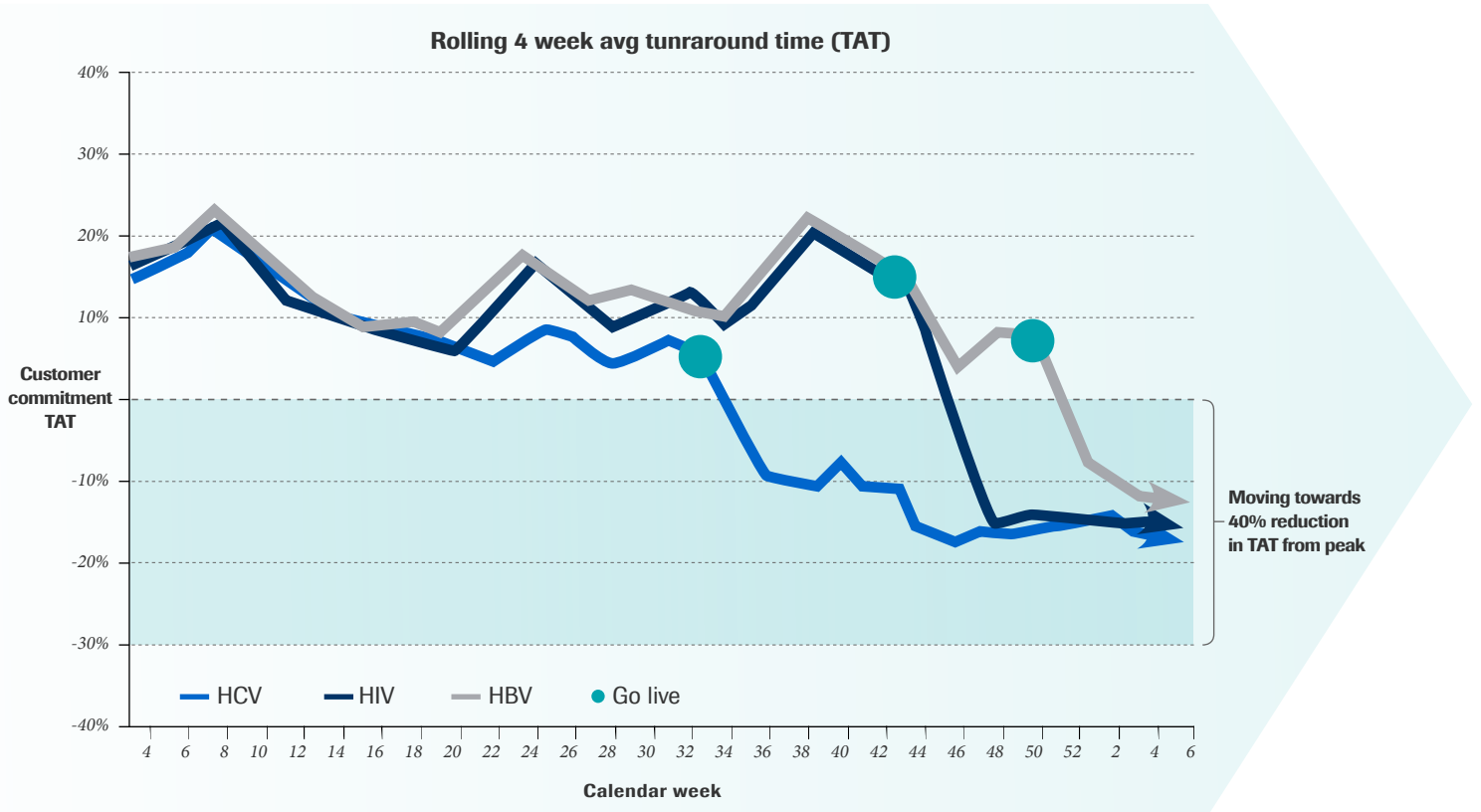


Next, the group moved their hepatitis C viral load testing onto the new systems, **improving overall turnaround time and allowing them to maintain a high level of service.**

Testing for HIV and hepatitis B virus were migrated shortly thereafter. The ready capacity gained from this migration allowed additional room to scale with no further investment needed.



The move to the **cobas**[®] 8800 System decreased their equipment footprint and enabled significant workflow efficiencies, leading to reduced staffing requirements (<25-30%) a 50% reduction in turnaround time, and significant gains in testing capacity.



* A key metric measured across the laboratory was turnaround time for HIV, HBV and HCV.

The laboratory group's consolidation to the **cobas**[®] 8800 System improved service levels and opened up the possibility of further lab consolidation and business growth.

Roche Sponsored Lunch & Learn.
 Session: Surviving the Third Wave: Reference Laboratories in the Information Age, 2017.

Why **cobas**[®] 8800 System and the Molecular Work Area?

The **cobas**[®] 6800 System and **cobas**[®] 8800 System offer the fastest time to results with the highest throughput and the longest walk-away time available among automated molecular platforms. As the first high throughput, fully integrated laboratory automation systems with a broad menu, they maximise the potential of real-time PCR testing and introduce a new standard for routine molecular testing in the areas of donor screening, viral load monitoring, women's health and microbiology.

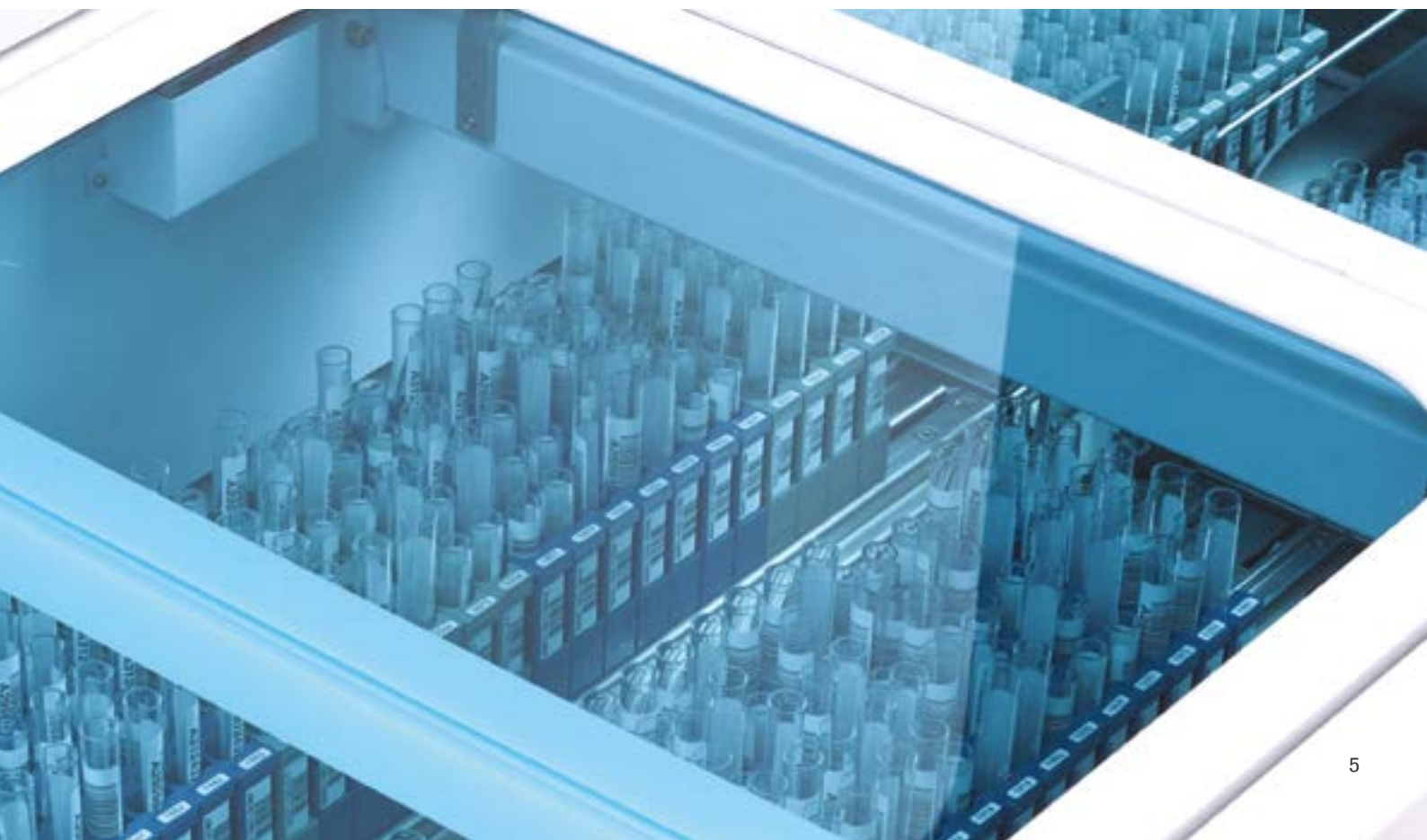
Combining these systems with Roche's **cobas**[®] connection module, **cobas**[®] Pre-analytical Systems and **cobas**[®] **infinity** laboratory solution, allows for the full automation of more than 90% of the testing volumes for a typical molecular lab.¹

Roche has set the standard in molecular connectivity, enabling the full integration of nucleic acid testing within the core laboratory. Prepare your laboratory for future success with increased productivity, reduced operating costs, and overall improvements in quality.

For more information, visit
molecularworkarea.com

Reference:

1. Data on file with Roche.



COBAS and TAQMAN are trademarks of Roche.

© 2021 Roche Diagnostics Limited. All rights reserved

Roche Diagnostics Limited, Charles Avenue, Burgess Hill,
West Sussex, RH15 9RY.

Company Registration Number: 571546

Date of preparation: May 2021

For healthcare professional use only in the UK and Ireland.

Not for Distribution

diagnostics.roche.com